

Fusible Web Applique', Placement Guides & the Applique' Pressing Sheet

by Sue Pritt of Sweet Season Quilts

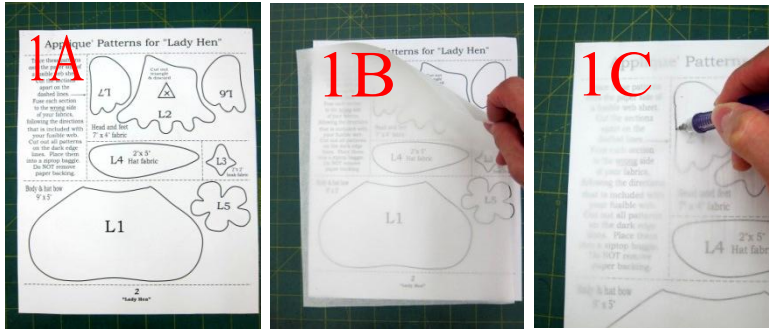
Supplies needed for fusible web applique'.

Applique' patterns, #2 pencil (or inkjet printer), straight edge ruler, applique' scissors, paper scissors, iron & ironing pad, tweezers, Teflon applique' pressing sheet, zip top baggie(s), light-weight paper-backed fusible web sheet, fabrics for project, (batiks & high thread count are preferred) Sewing machine with "walking foot" & "applique'/free-motion foot".

Steps for making fusible web applique'

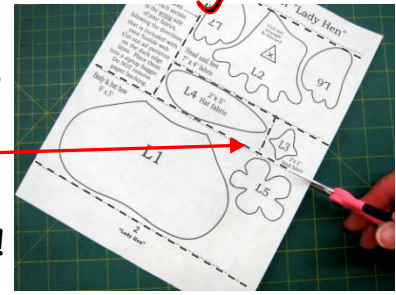
Step 1A Place applique' page from pattern on table.

1B Lay fusible web sheet, fusible side down, over applique' page. **1C** Using a #2 pencil, trace AND label patterns.

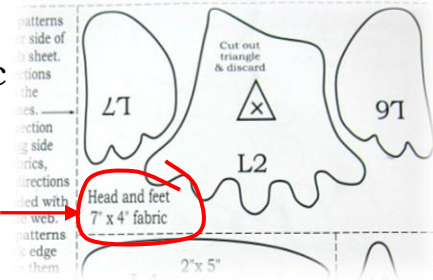


After tracing shapes, cut **sections** apart on dashed lines.

*Do NOT cut out shapes at this time!



Our patterns show you the color AND size of fabric required for each section. Cut fabric to size (not smaller)



Step 3 – Heat iron to medium-hot setting. No steam needed.

HOWEVER read instructions included with your fusible web! Some do NOT need fusing at this time, but hand pressed to fabrics instead!

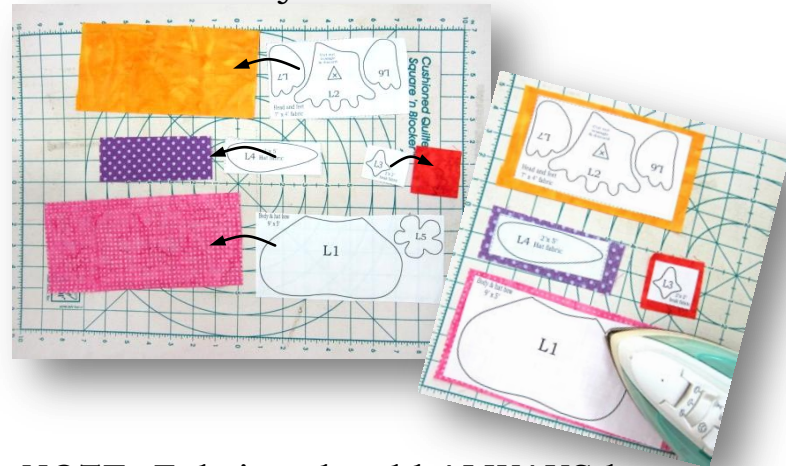
Place fabrics to be fused,

right side down on ironing pad.

Position fusible web sections, sticky side down over fabrics.

Fuse to fabrics, approx. 10 seconds

OR follow directions included with your fusible web.



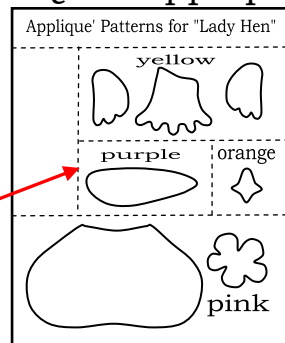
NOTE: Fabrics should ALWAYS be larger than the fusible web sections! Otherwise you'll iron the fusible web edges to your ironing pad, which cannot be removed from pad if this happens.

Always use an INKJET printer not laser

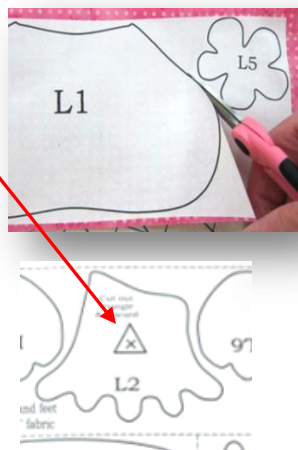


Step 2 Sweet Season Quilt applique'

shapes are drawn and grouped together in sections according to color; with dashed lines between each color section.



Step 4 - Cut out shapes on edge lines. If there is an "X" section in the shape, cut out and discard. Do NOT remove paper backing. Shapes with straight lines may be cut apart using your rotary cutter, ruler and mat.

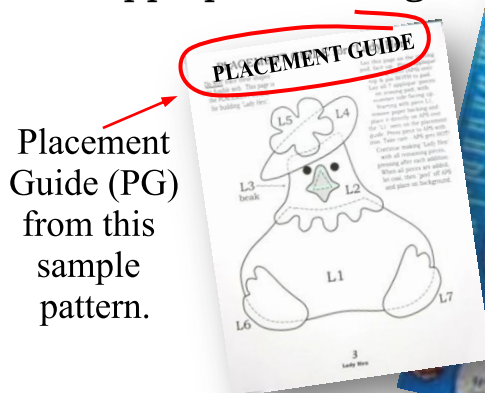


Step 5 - Divide shapes into groups according to "part numbers". See individual pattern directions for more information. Use ziptop baggies to store & separate groups.



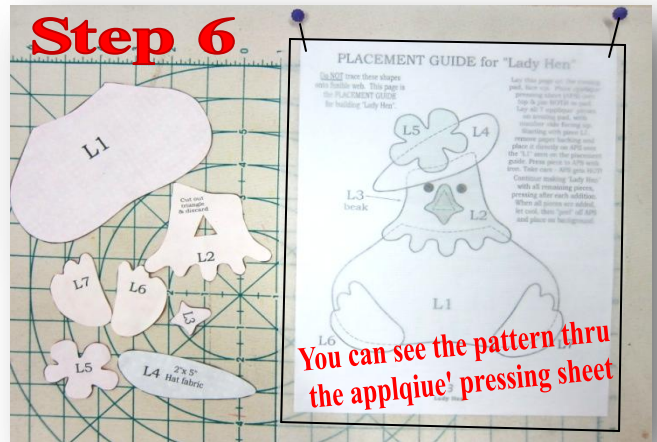
Shapes (or pieces) not in scenes or without part numbers should be placed in their own baggie.

Step 6 - To make the "Scene" (or "Unit"), you'll need the Placement Guide (PG) from the patterns AND the Appliqué Pressing Sheet (APS).

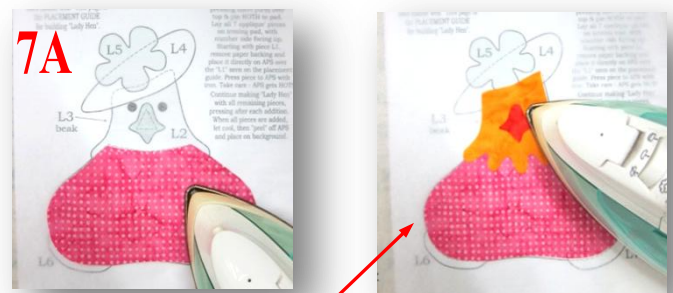


Placement Guide (PG) from this sample pattern.

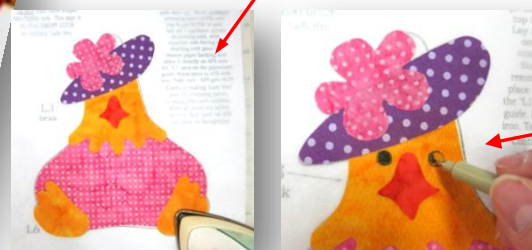
Lay PG, (placement guide from pattern) face up on ironing pad.
Lay APS, (appliqué pressing sheet) over PG and pin BOTH to pad at top corners.
Lay all appliqué pieces for this "scene" off to the side on the pad, with part number facing up.
See photo at top of page.



Step 7 - The part numbers in this example pattern are labeled L1 thru L7. **7A** - To "build" the scene, start with part number "L1". Remove its paper backing and place it directly on the APS, sticky side down, matching the L1 of the PG. Fuse to APS with medium-hot iron.



Continue adding all pieces in alpha-numeric order, fusing after each addition.



(This pattern states to draw in the eyes before removing from APS.)

Pieces will overlap as you "build" the scene. When all pieces are added, let cool on APS. **7B** - Peel scene from APS and **(7C)** position on quilt top, following directions in pattern.

