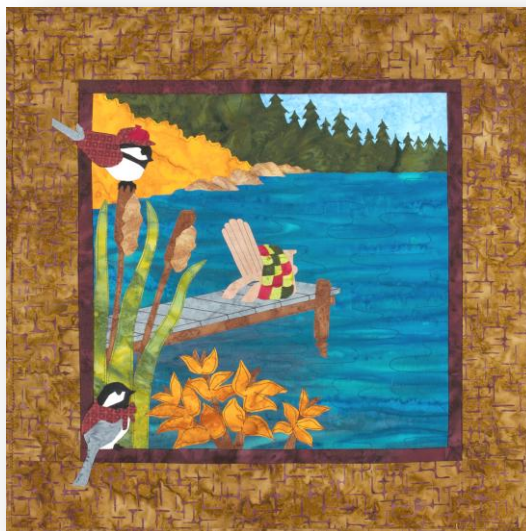


“Up North Autumn”

Workshop with Sue Pritt



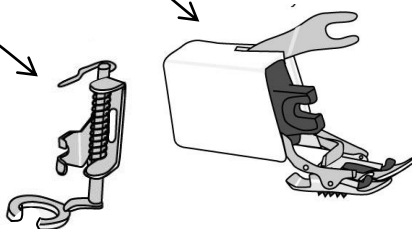
Thank you for signing up for our one day workshop with designer/teacher, Sue Pritt. Learn or brush up on techniques of raw-edge fusible appliqué, free motion quilting, and quilting ‘as-you-go’; with hints, tips and fun throughout the day!

We’ll be starting off the class with sandwiching and quilting!

Please have your backing & batting ready to go!

And, besides your pattern & fabrics, please bring the following

- __ sewing machine (oiled, cleaned and must know how to thread & use your machine)
- __ walking foot (VERY IMPORTANT!)
- __ appliqué (or darning) foot
- __ threads to match appliqué pieces
- __ filled bobbins to match appliqué
- __ extra needles & extra bobbins
- __ rotary cutter with new blade
- __ rulers: __24” ruler __12 ½”square
- __ cutting mat -18”x 24” is a good size
- __ 505 or Mettler basting spray (no others allowed, please)
- __ safety pins if NOT using spray
- __ small appliqué scissors with micro-sharp points
- __ long straight pins & magnetic pin holder
- __ quilting gloves
- __ erasable OR washable fabric marking pen or pencil
- __ appliqué pressing sheet
- __ extension cord (at least a 9 foot cord)
- __ iron and ironing pad (unless supplied by shop or guild)
- __ lunch and beverage (Chocolate is always good, too!)



These are optional & may be supplied by shop

*** If you do not have a walking foot OR appliqué foot – please buy or borrow them! They are required for this class!**

*** PLEASE *
PRECUT your Backing Fabric and Batting!
21” x 21”
See reverse side for more pre-cutting!**

“Jump Start” for cutting AND making appliqué for “Up North Autumn”

Step 1 – Cut the “B’s” - Backing, Batting, Borders, Binding and Background

Backing fabric & Batting ----- cut 21” x 21” *each*

Inside Border – Brown ----- cut four – 1” x 21”

Outside Border – Brown Print ----- cut four - 2¾” x 21”

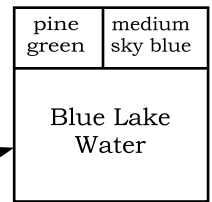
Binding – Brown Print ----- cut four - 1½” x 21”

Background – Blue Lake Water ----- cut one - 12½”w x 10”h

Pine Green----- cut one – 6”w x 3”h

Medium Sky Blue----- cut one – 7”w x 3”h

} sew together as
shown here with
quarter inch seams – press seams open.



If you have done fusible web appliqué before you may want to get a jump start on fusing and cutting; HOWEVER, we can do this in class.

The following directions are ONLY if you feel comfortable doing some things on your own.

NOTE: not all paper backed fusible webs are created equal! The following are the ones that I have used and know work well – I cannot guarantee the success of any others. So I’d recommend one of these . . . Print-N-Fuse – Lite Heat & Bond – Soft Fuse.

If you purchased a kit with pre-printed fusible web sheets – skip to step 3.

Step 2 - Trace OR photocopy all the appliqué patterns from pages 3 & 4 onto the paper side of fusible web sheets. Use either a light fusible web for tracing – OR – Use “printable” fusible web sheets with your inkjet printer.

• Cut apart the sections of the fusible sheets on the dashed lines. ➤

• Do NOT trace or photocopy pages 2 & 5. They are placement guide pages; not appliqué patterns.

Step 3 - Fabrics – use unwashed fabrics (OR washed fabrics, but do NOT add fabric softener).

TIP: Batiks are *always* best for raw edge fusible web appliqué!

Step 4 - Cut your fabric to the size listed on each section of the appliqué pages (or larger).

Step 5 - Fusing – lay fabric, • RIGHT SIDE DOWN ➤ on ironing pad. Lay fusible web sheet, sticky side down over fabric. The paper side that you traced or photocopied will be facing up.

Step 6 - With a hot iron (wool or cotton setting), PRESS the fusible web sheets to the fabrics.

Do NOT slide the iron around, instead “lift and press”.

Step 7- After fusing all the appliqué sheets to your fabrics, cut out patterns on the traced lines.

TIP: for tiny pieces, cut a quarter inch margin around the shape, you’ll cut them out completely in class!

• Do NOT peel the paper from the back of the appliqué pieces.

Step 8 - Separate cut out pieces according to their “part number”, and place in separate baggies.

Example: Place all “HS” shapes (pieces) into one baggie; all “LB” pieces into another baggie, etc., etc.

Place pieces without part numbers into one large ziptop baggie.

Be sure to bring all your baggies to class, AND any leftover fabric.

(You never know if you might need a bit more. ☺)

Don’t forget your walking foot - AND – open-toe, free motion (darning) foot!

See you Soon!

Sue Pritt